

Radiator Grill Store

www.radiatorgrillstore.com
Naperville, IL 6064



1999 - 2002 Porsche Boxster 986 S with SMALL front radiator grille opening (typically with the center radiator option) Installation Procedure



Note: it is best to protect your paint with painter's tape during the installation procedure. Though not necessary if care is taken.



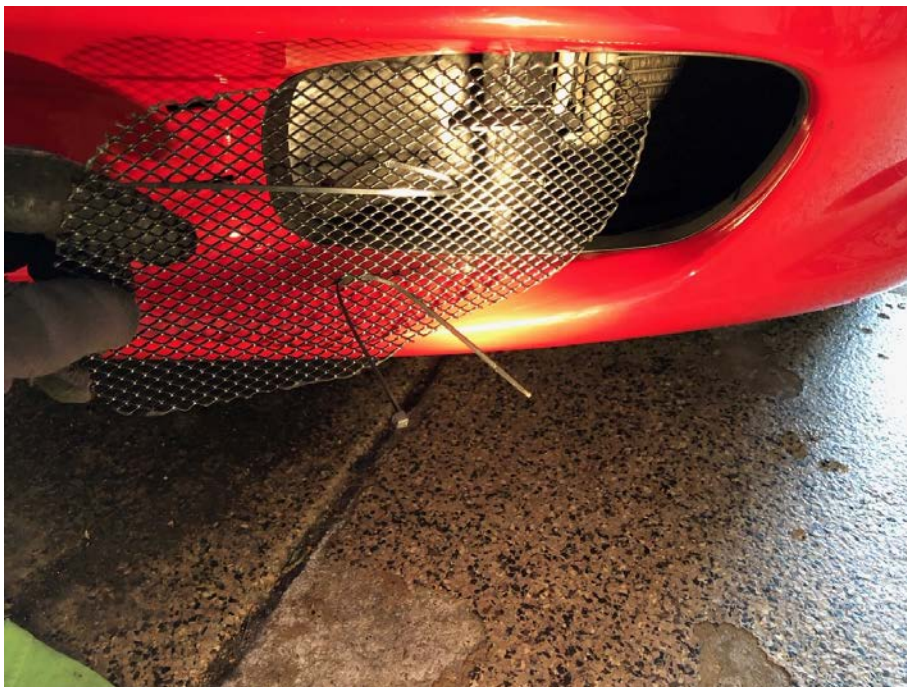
Procedure

1. Remove lateral trim pieces. These easily pull out straight towards you. They are different sizes, pay attention to which one came from where.





2. Insert the grill as shown, the driver's side does not have a hole in the screen. The passenger side has a hole to accept the temperature sensor.



3. Insert grille, position the grille and loosely connect the cable ties under the middle mounts as shown.



4. Once positioned to ensure no gaps around the edges, pull the cable ties taugt and clip off the tails with side cutter pliers.



5. For the passenger side, the temperature sensor will need to be removed from its perch, easily pulled out towards the radiator. Once out, insert the grille into the radiator cavity and feed the temperature sensor back through the grill and re-insert the sensor into its perch. Then complete steps 3 and 4 to complete the installation.





6. Replace cover trim pieces. Complete!

