

**CSF Cooling – Racing & High Performance
Porsche 911 Turbo High Performance Intercoolers (991 series)
Installation Instructions**



www.CSFace.com

Step 1

Removing the intercooler pod



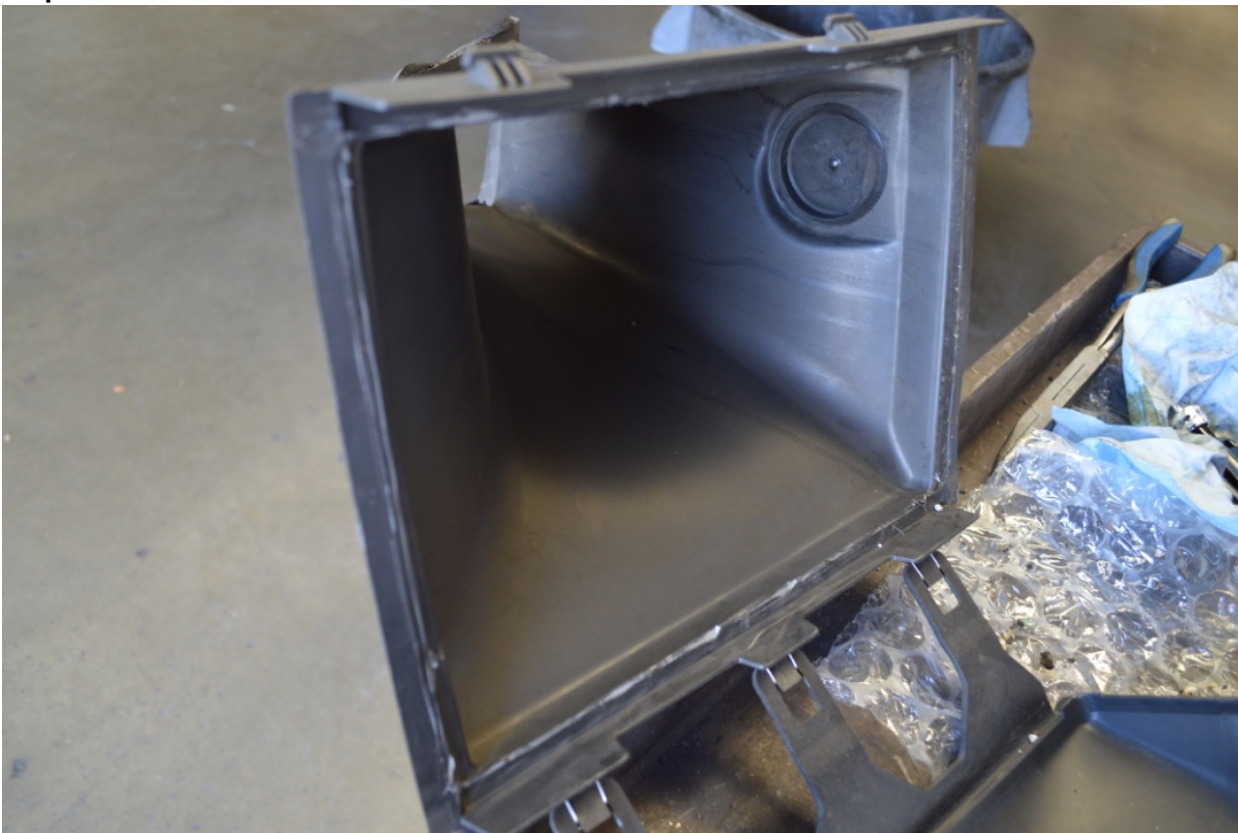
CSF recommends, for easiest installation, to remove the entire intercooler pod – including both intercooler shrouds and all hoses. It is much easier to install a new high performance intercooler if the full pod is out of the vehicle.

Step 2



There may be oil that has collected from the turbos in the lower intercooler piping. It is recommended to clean the oil out of these hoses before installing the new intercooler. Please be careful not to disrupt, remove, or tear the sealing O-ring inside the OEM “quick-connect” fitting.

Step 3

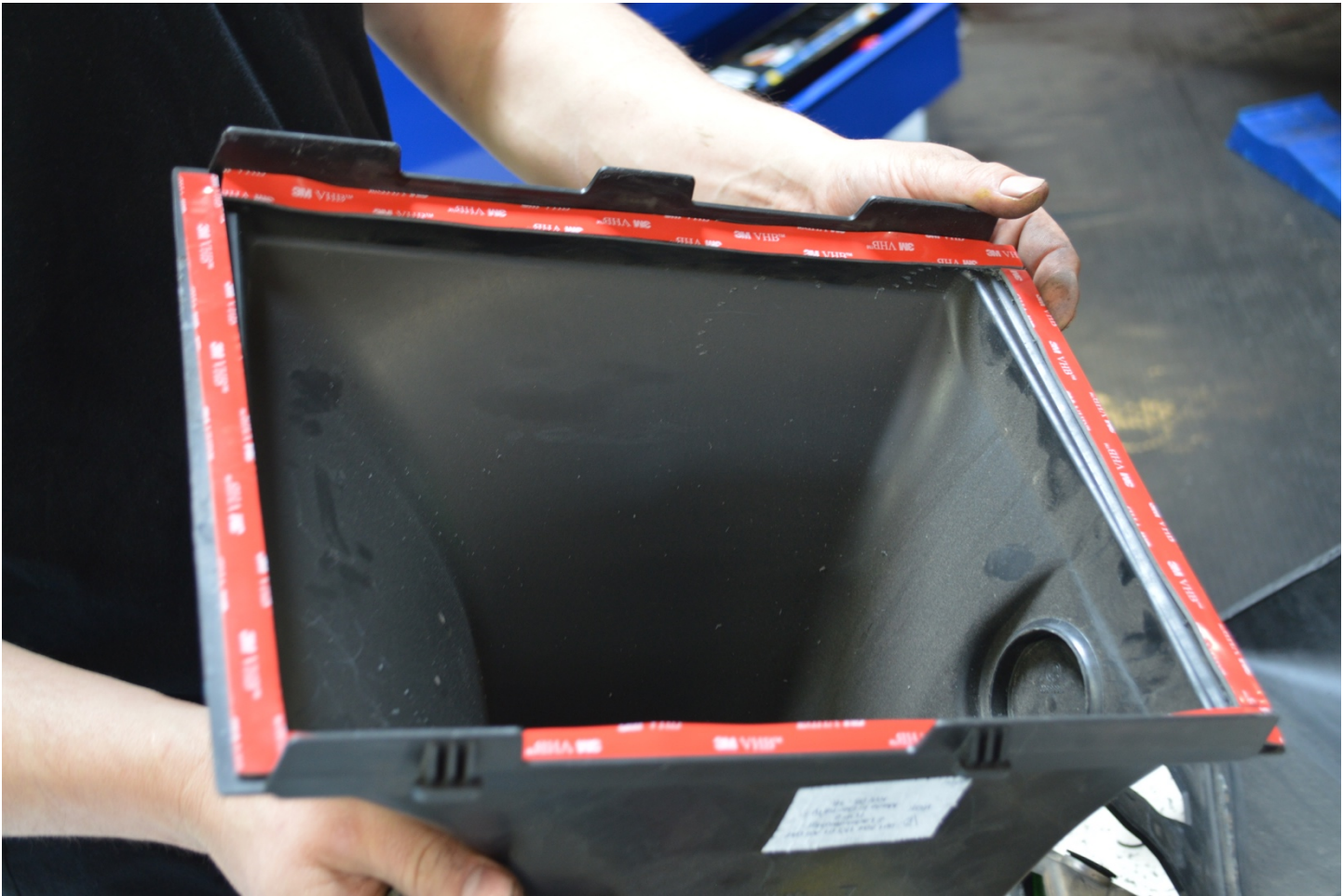


**Please trim the inside of both upper and lower intercooler shrouds.
Trim all the way back inside the top/bottom attaching flaps around the full inside of the shroud (all the way around)**





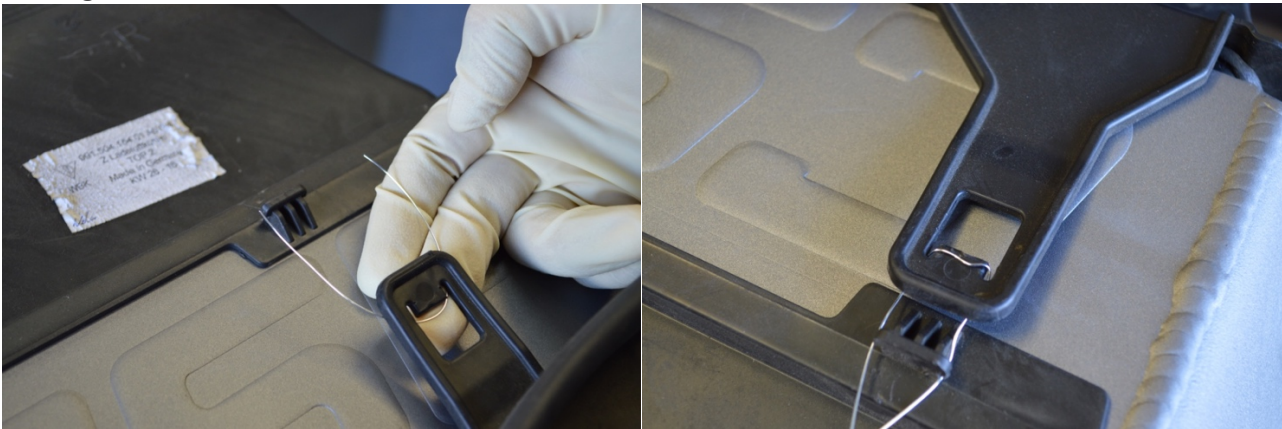
For an additional air leak seal (not required) – CSF recommends using 3m double sided tape around the seal of the modified shroud.



Step 4



Because of the increased thickness of the core from the OEM 80mm (3.15 inch) to the CSF 115mm (4.52 inches), after trimming the inside of the shroud there will still be a connecting gap of the plastic shroud locking mechanism.

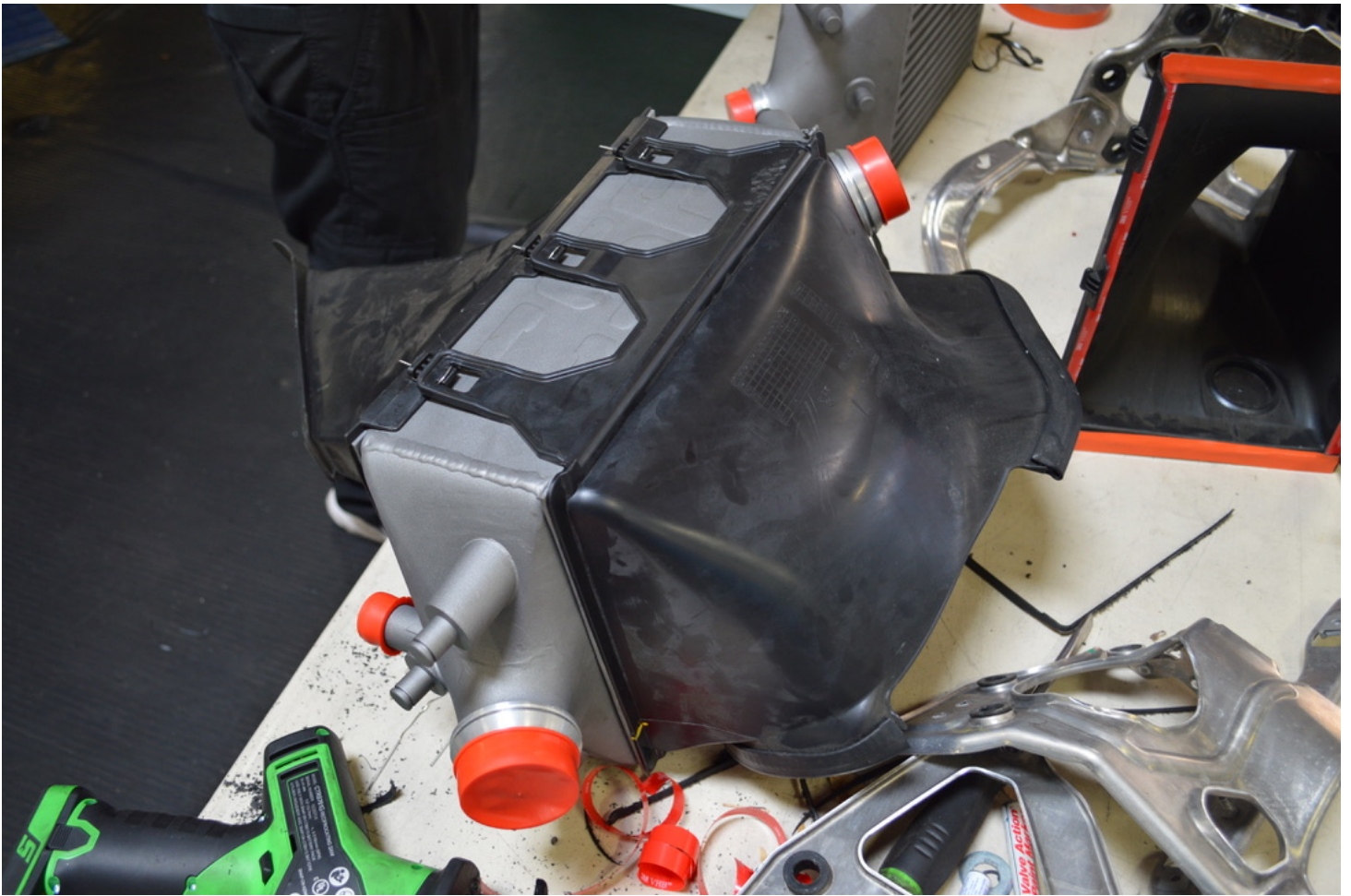


CSF has come up with a simple mounting solution using stainless steel wire. Simply cut a small piece of wire, and attach like the picture in the right above.



Twist the wire to create tension and a tight seal between the shrouds and the intercooler surface. (you may want to include some simple weather foam stripping between the face of the shroud and intercooler core for optimum airflow through the intercooler core (see picture of 3m tape being applied in step 3).





Intercooler assembled and secured. Ready to be installed back into the vehicle.

Step 5

Reverse steps of removing the intercooler, and the intercooler should install just like the OEM set-up. Utilize the OEM shrouds, rubber mounting bosses and mounting pin clips to reinstall the intercooler pod using the CSF intercooler.

***NOTE* (STEP 6)**

Some installers have reported easier installation with less force needed if the upper side of the upper shroud is also slightly trimmed. If this is the case, and desired by the installer, please follow this additional step:

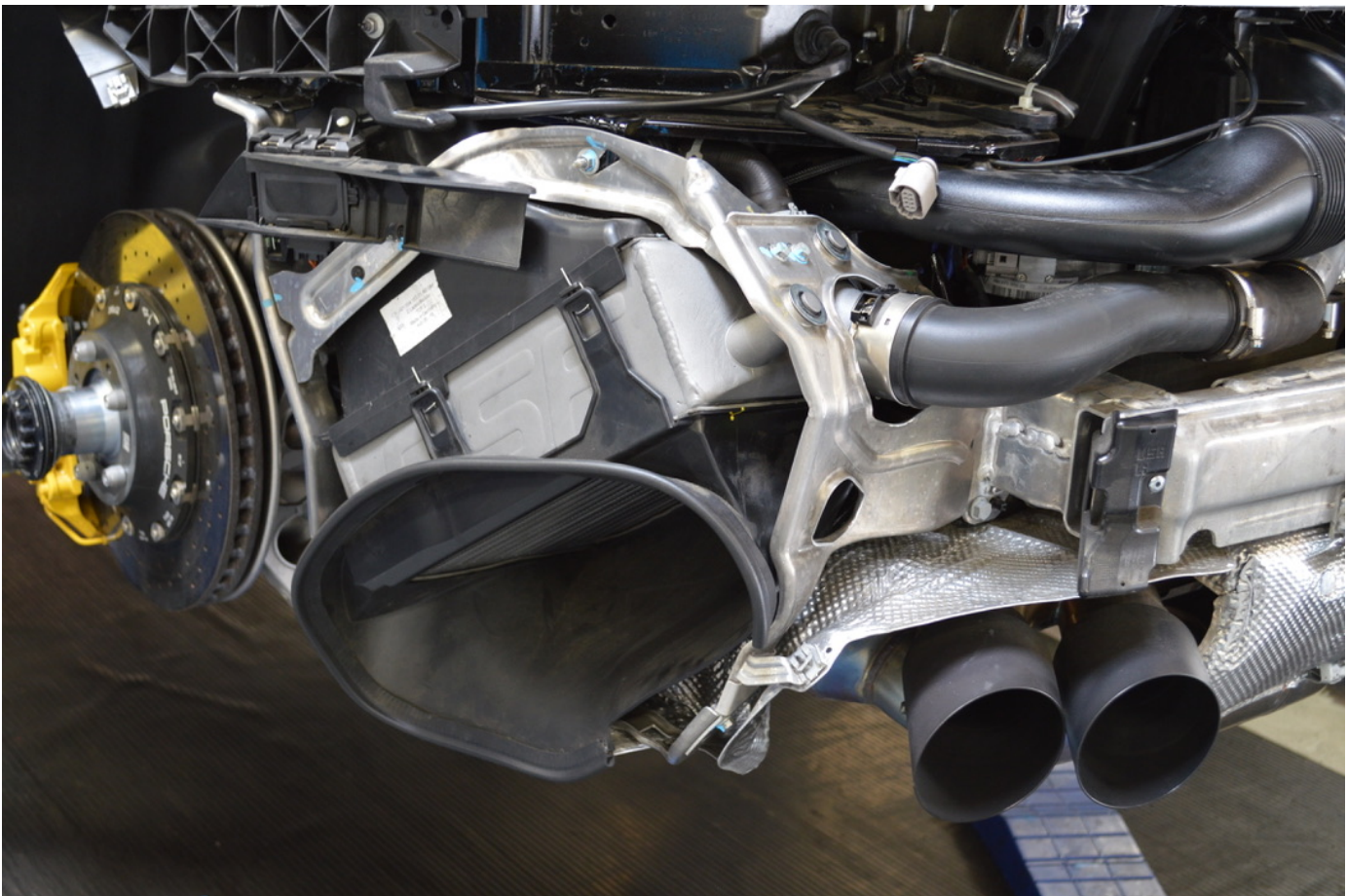


Trim down the upper radiator shroud (as seeing in the picture above and below)



Upper flap needs to be trimmed down by 10mm (or ~ ½ inch)







For any questions – please contact: info@csfrace.com
- or -
call: (909)355-1991, and ask for the high performance division

www.CSFrace.com