

DESIGN911 UK

Installation Instructions



Porsche 993 ('94-'98)

Porsche 964 ('89-'93)

Complete 19-piece carpet set

Before you begin

Instructions are based on a '94 Porsche 993 Coupe LHD. Slight variations will apply to 964, Targa, Cabriolet and RHD models.

Installation of your carpet set takes 6 to 8 hours. You may want to print of these installation instructions or have them opened on your (portable) PC in your work area.

This photo-file is meant as a reference-aid for installation only. Remember, the best way to ensure a trouble free installation is through a systematic and deliberate removal sequence. Do not just rip it out, but carefully review the fit of each piece before you remove it. This is your best guarantee for an easy installation.

Never throw away your old carpets before installation of your new set is complete.

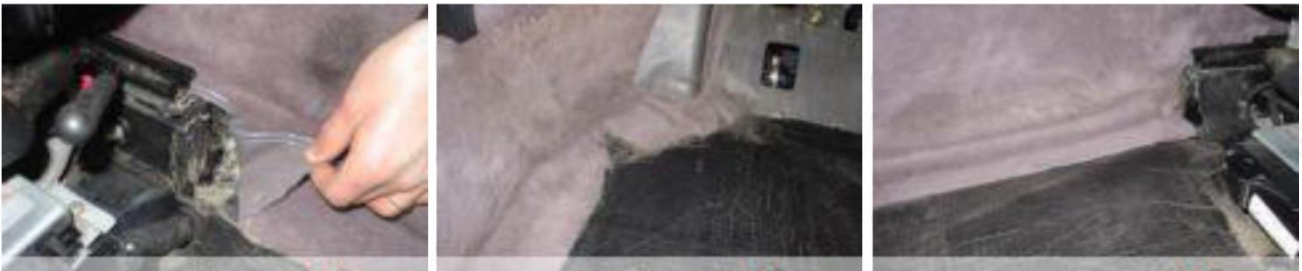
'Reading' your old carpets holds valuable clues to install your new set to perfection.

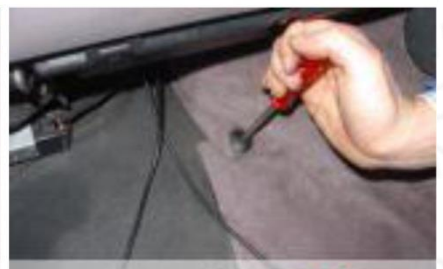
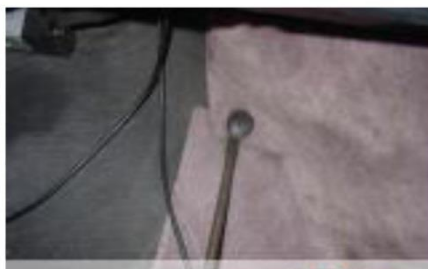
You will need following tools:

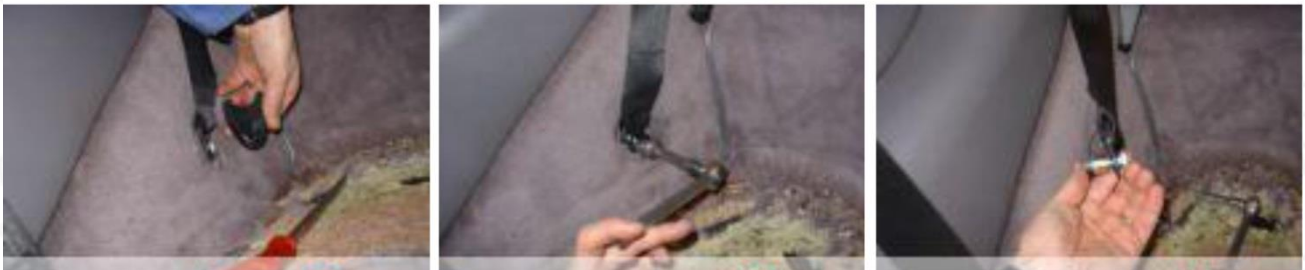
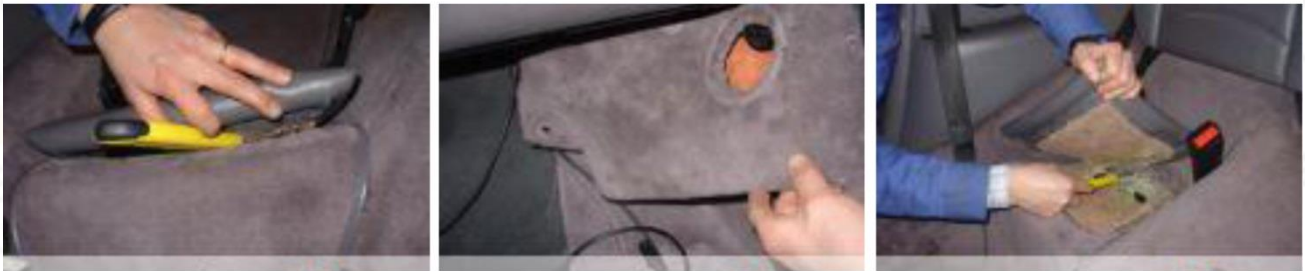
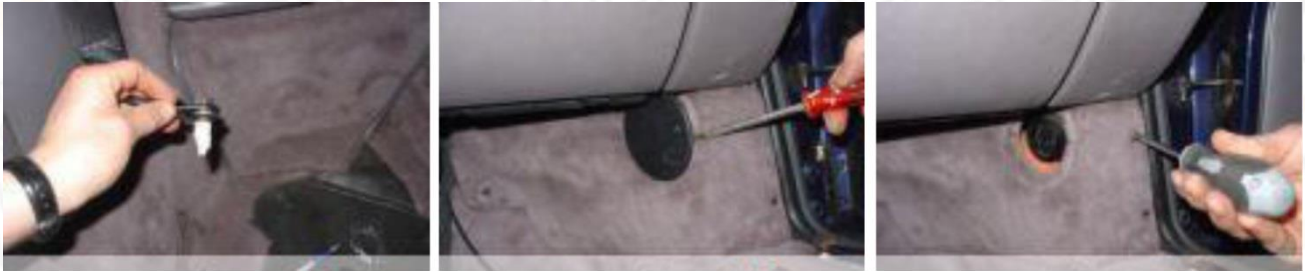
- Spray glue for automotive use (2 cans)
- Scissors
- Stanley knife
- Metric ratchets (M13,M15,M17)
- Metric spanners (M8, M10, M13)
- Ballpoint pen
- Masking tape
- Screwdrivers (flat and Phillips)
- Hairdryer (if necessary)

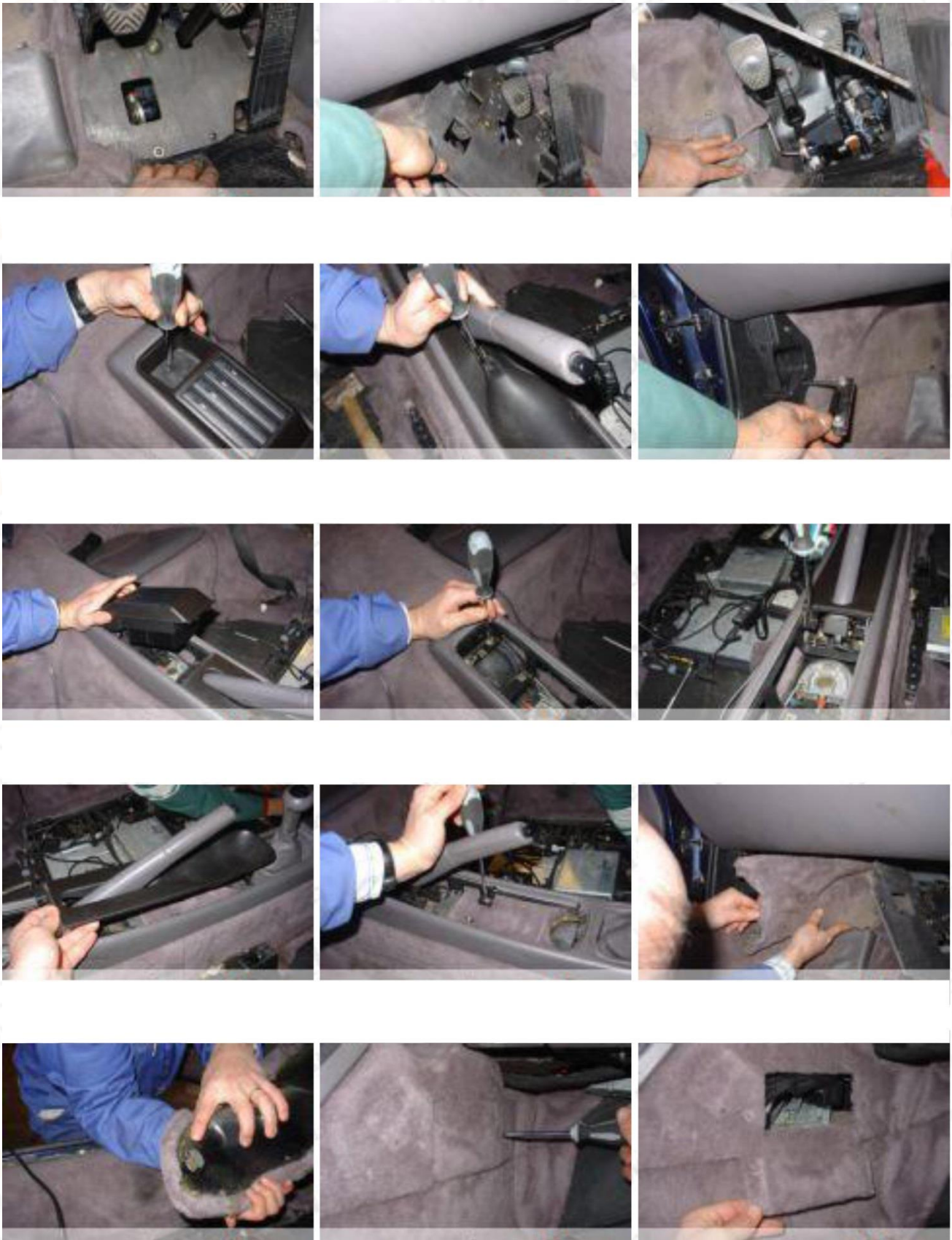
If the temperature is below 15°C (65F) you may want to consider using a hairdryer to improve adhesion of the glue.

Removing your old carpet set

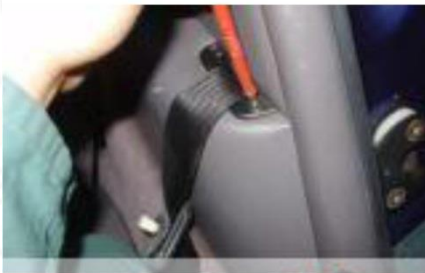












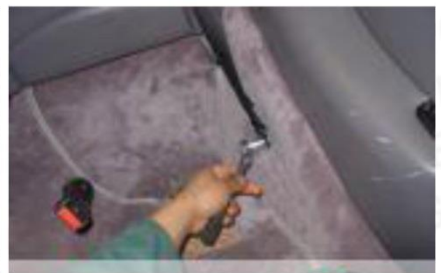
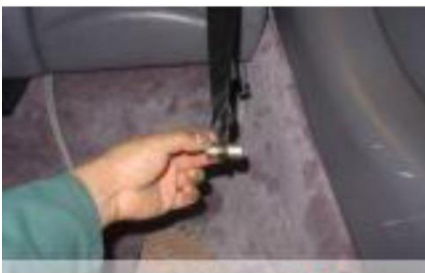






Installing your new carpet set





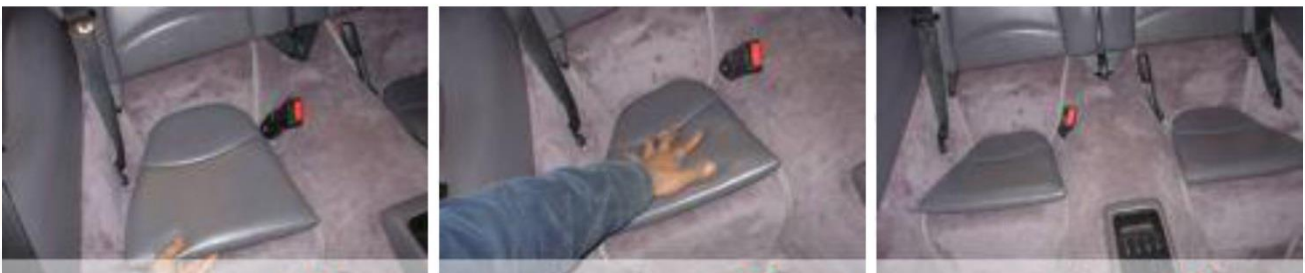




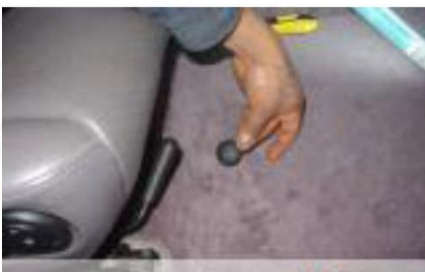














Maintaining your carpet set

You have bought one of the finest carpet sets available. To keep your set in pristine condition vacuums your carpets every month or more frequently if necessary.

If soiled, apply upholstery cleaner with a damp cloth and wipe off with a clean dry cloth.